

NSC Incident Rate Calculator

Powered by NSC Navigator

Do You Know What Your Safety Outcomes Are Telling You?

If you track safety incidents, chances are you do so on an OSHA 300 log. But did you know that if you have more than 10 incidents a year and aren't graphing it, you could be missing some hidden trends in that data? And do you know how your safety outcomes compare to others in your industry?

Get knowledgeable about your safety incidents by using the NSC Incident Rate Calculator. This benchmarking tool will compute incident rates based on entered OSHA 300 log information and allow locations to compare their safety performance against BLS industry averages.

How It Works

Comparisons against benchmarks will allow for monthly comparisons at the location level. These comparisons require the collection of:

- Name of location
- NAICS code for location (via lookup tool provided)
- Year and Month of data being reported
- Total Recordable Cases (TRC) for each month
- Days Away From Work Cases (DAFW) for each month
- Number of Hours Worked for each month

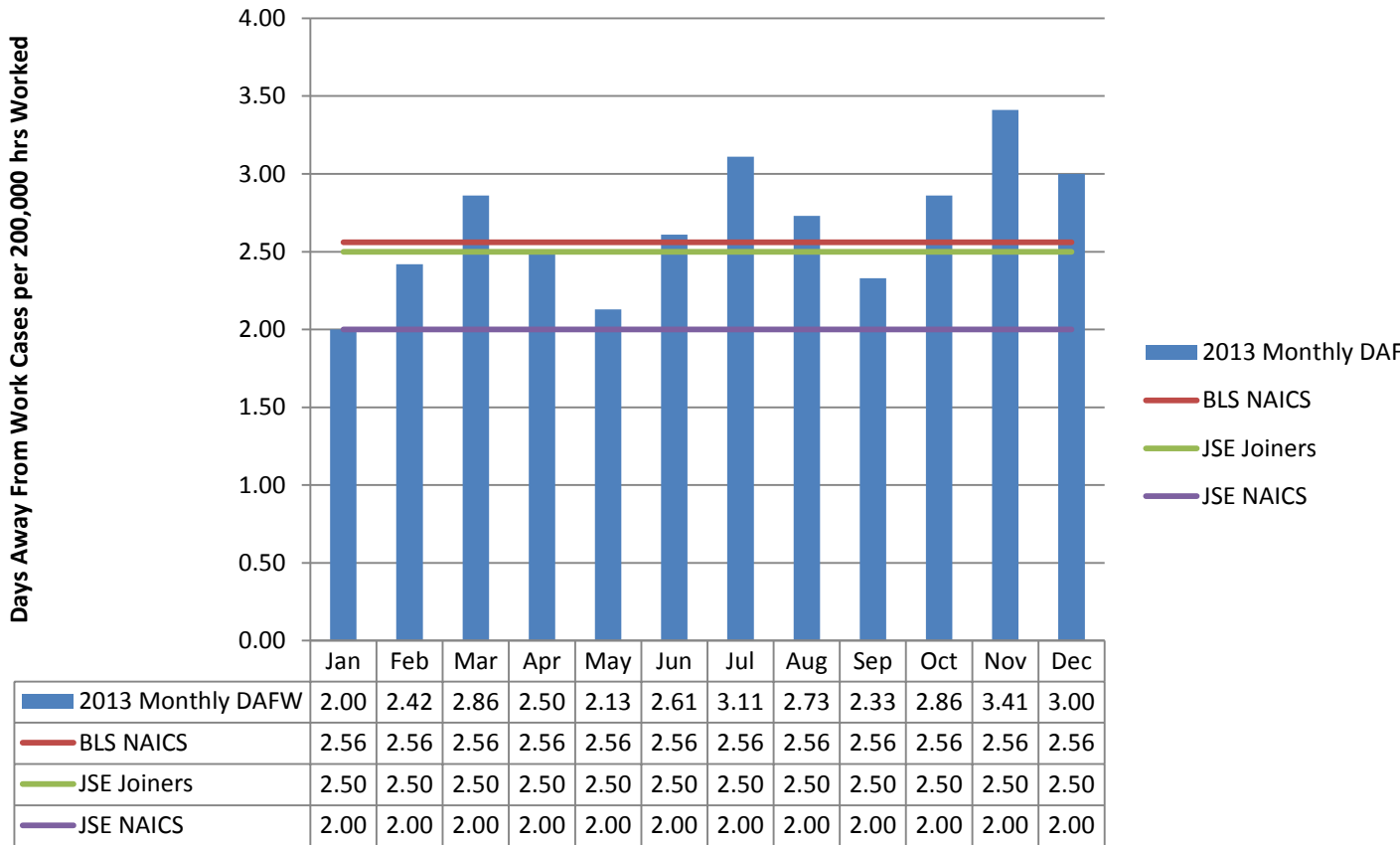
All data is input and reported at the location level.

In total, four rates are calculated, shown with three possible benchmark comparisons. Monthly and year to date (YTD) rates are calculated for both Total Recordable Cases (TRC) and Days Away From Work (DAFW). A month over month comparison is possible for up to 5 years of data. Your location's data is compared to the Bureau of Labor Statistics (BLS) rates for the NAICS code you provide.

If available, two other benchmarks will be displayed. The JSE Joiner benchmark reflects calculations for all Journey to Safety Excellence joiners who have provided data in the NSC Incident Rate Calculator tool. The JSE NAICS benchmark reflects calculations for Journey to Safety Excellence joiners providing location data within the same NAICS as your location.

For each location, the following two graphs/tables are provided (one for TRC and one for DAFW).

Benchmark Comparison of Days Away From Work (DAFW) Rate [LOCATION NAME]



What the data are telling you

Graphing and benchmarking your incident data can unveil several things:

- Whether you are behind, ahead of, or on par with your competitors in safety outcome performance
- Seasonal fluctuations in your incidents
- Whether you are improving, getting worse, or plateaued in your safety performance
- How organizational changes such as layoffs, furloughs, and the like impact reported injuries and illnesses
- Whether specific safety investments have worked or are working to reduce injury and illness frequency

By understanding these factors, you can take more effective action, targeting specific areas of improvement.

Begin inputting NSC Incident Rate Calculator data today!

Additional resources

For additional analysis of your safety system, NSC offers in depth employee perception surveys as well as consulting services to help make your results not only meaningful, but actionable. Find out more when you visit nsc.org/surveys.

Visit nsc.org/members_get_more to see why more than 51,000 members have joined NSC. As an NSC member, you can take advantage of resources designed to guide you and help keep your employees safe. Member-exclusive benefits include FREE publications, tools and resources as well as discounts on events, products, publications, training and more!

Visit nsc.org/surveyexpress to learn how to engage your entire organization in safety improvement. Start with NSC Safety Barometer, an affordable and accurate perception survey, to take a snapshot of how your organization's safety management system is operating today.

Visit nscnavigator.com to learn about safety management solution, NSC Navigator, a highly adaptable web-based program that allows you to measure your safety performance, tracking areas of improvement as well as successes. This program engages employees at every level, giving them the ability to enter hazards, near misses and incidents into a centralized database. Immediately actionable, this database creates reports that expedite the correction of hazards and reduction of risk, ensuring a safer workplace.