



# Unintentional Injuries Overview



# Unintentional Injuries



- #1 cause of death for people 1 to 41 years old
- #5 cause of death for all ages

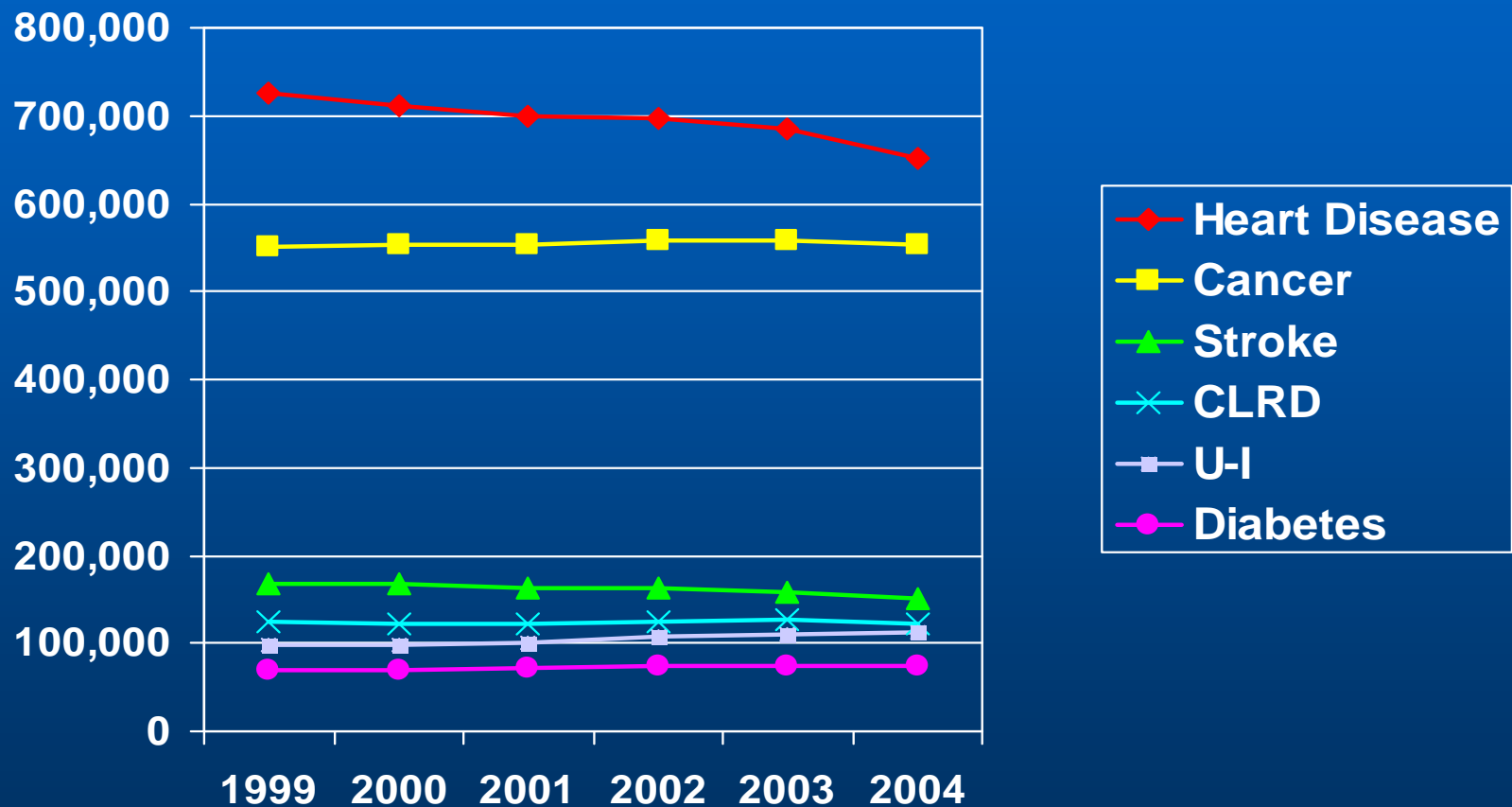


# Leading Causes of Death, 2003

Heart disease	685,089
Cancer	556,902
Stroke	157,689
Chronic lower respiratory disease	126,382
<b>Unintentional injuries</b>	<b>109,277</b>
Diabetes mellitus	74,219



# Trends in Leading Causes of Death



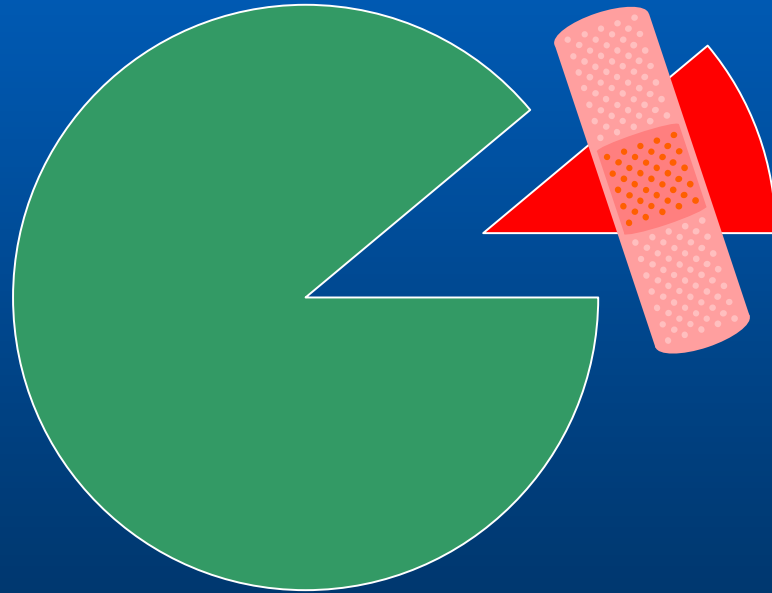
# Trends in Leading Causes of Death

Annual Change*	
<b>U-I #</b>	<b>+ 3,145 / year</b>
<b>Diabetes #</b>	<b>+ 1,559 / year</b>
<b>Cancer</b>	<b>+ 1,005 / year</b>
<b>CLRD</b>	<b>+ 113 / year</b>
<b>Stroke #</b>	<b>- 3,350 / year</b>
<b>Heart disease #</b>	<b>- 12,678 / year</b>



# Unintentional Injuries

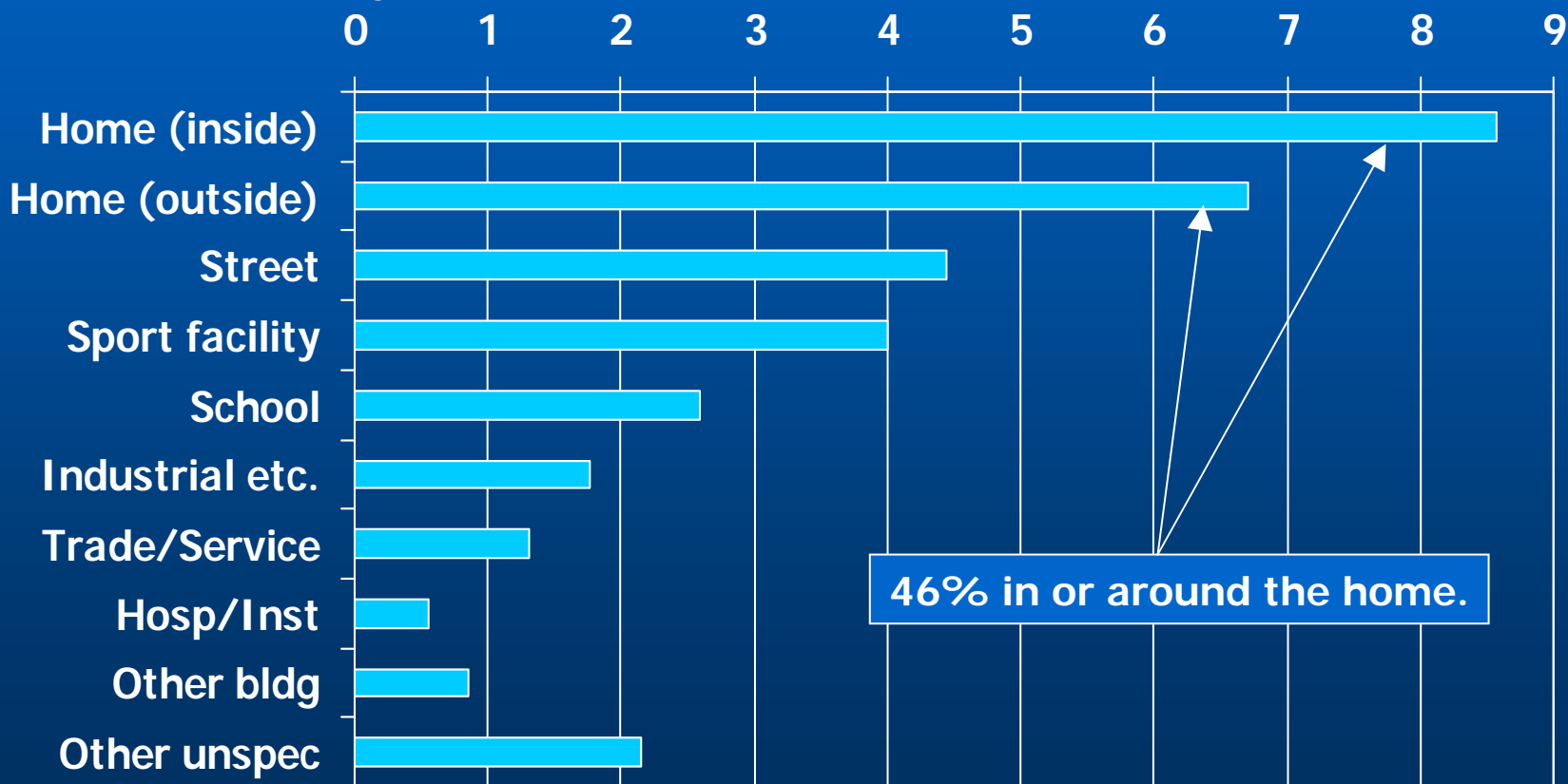
- In 2004, 33.2 million people – 1 in 9 – sought medical attention for an injury.



# Medically Attended Nonfatal Injuries

By Place of Occurrence, 2004

Millions



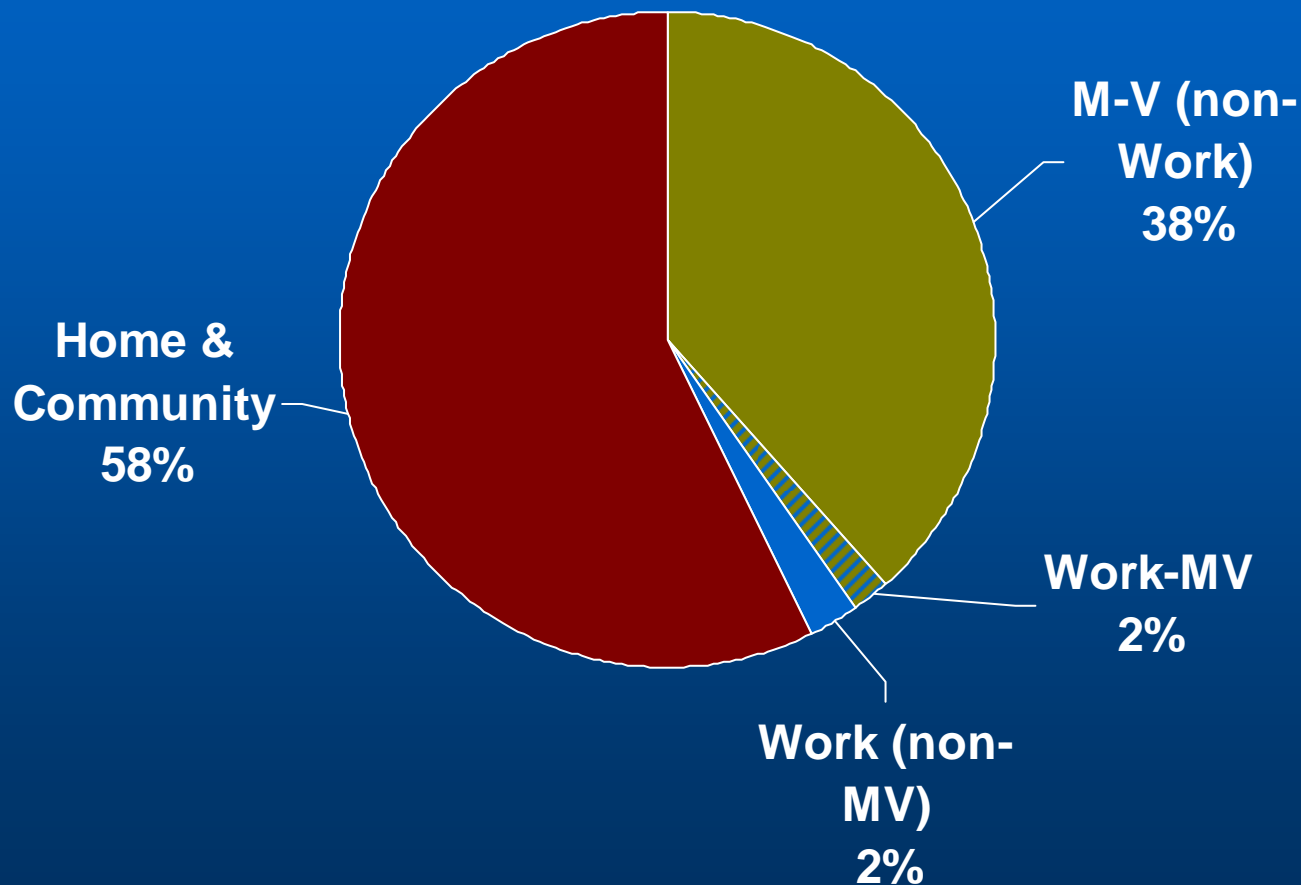
# Latest Estimates: 2005

Venue	2005 Deaths	Change from 2004
All U-I	113,000	+1%
Motor-Vehicle	45,800	+1%
Work	4,961	-1%
Home & Community	64,600	+1%





# U-I Deaths by Venue, 2005

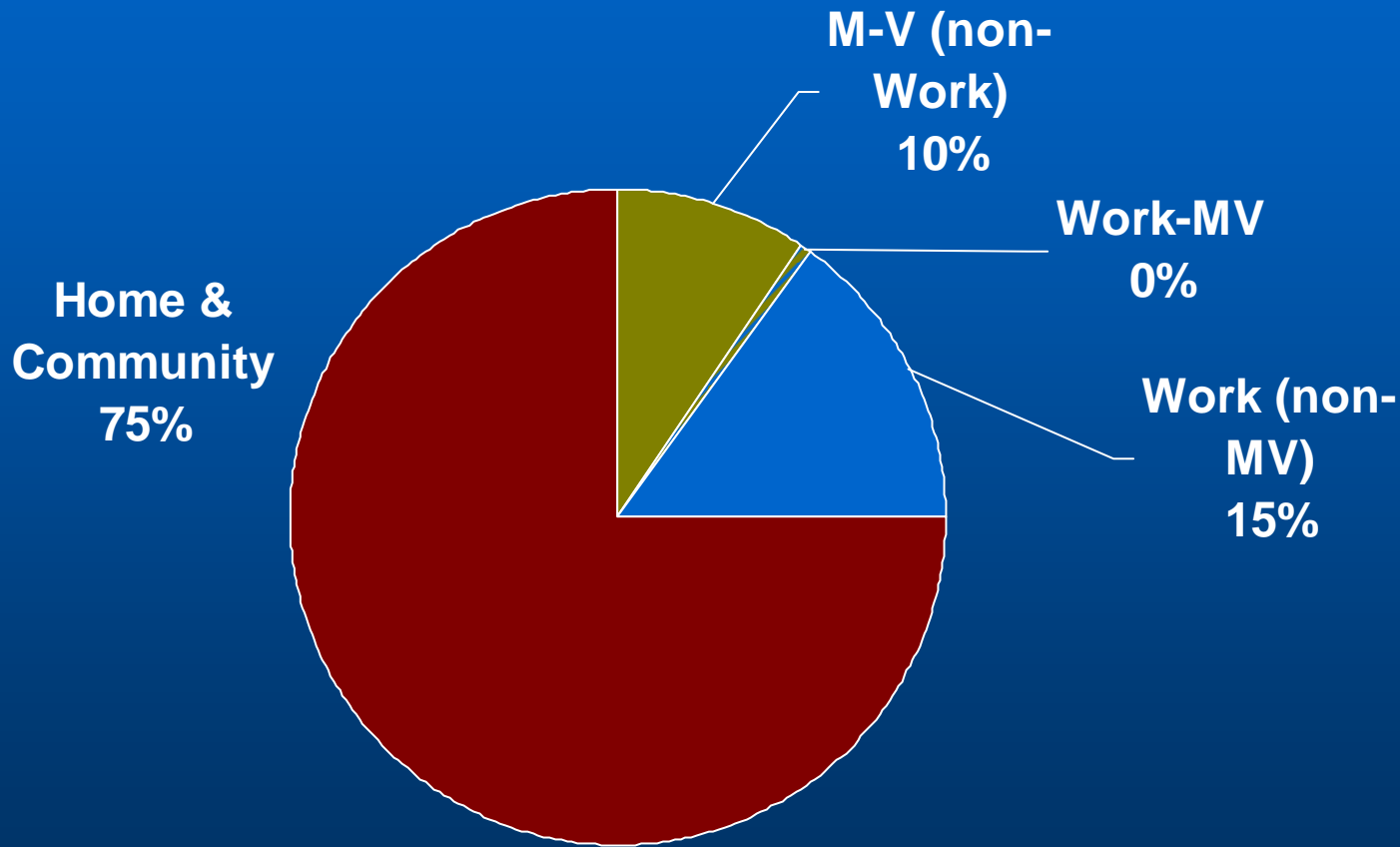


# Latest Estimates: 2005

Venue	Disabling Injuries	Costs (billions)
All U-I	24,100,000	\$625.5
Motor-Vehicle	2,400,000	\$247.7
Work	3,700,000	\$160.4
Home & Community	18,100,000	\$238.6



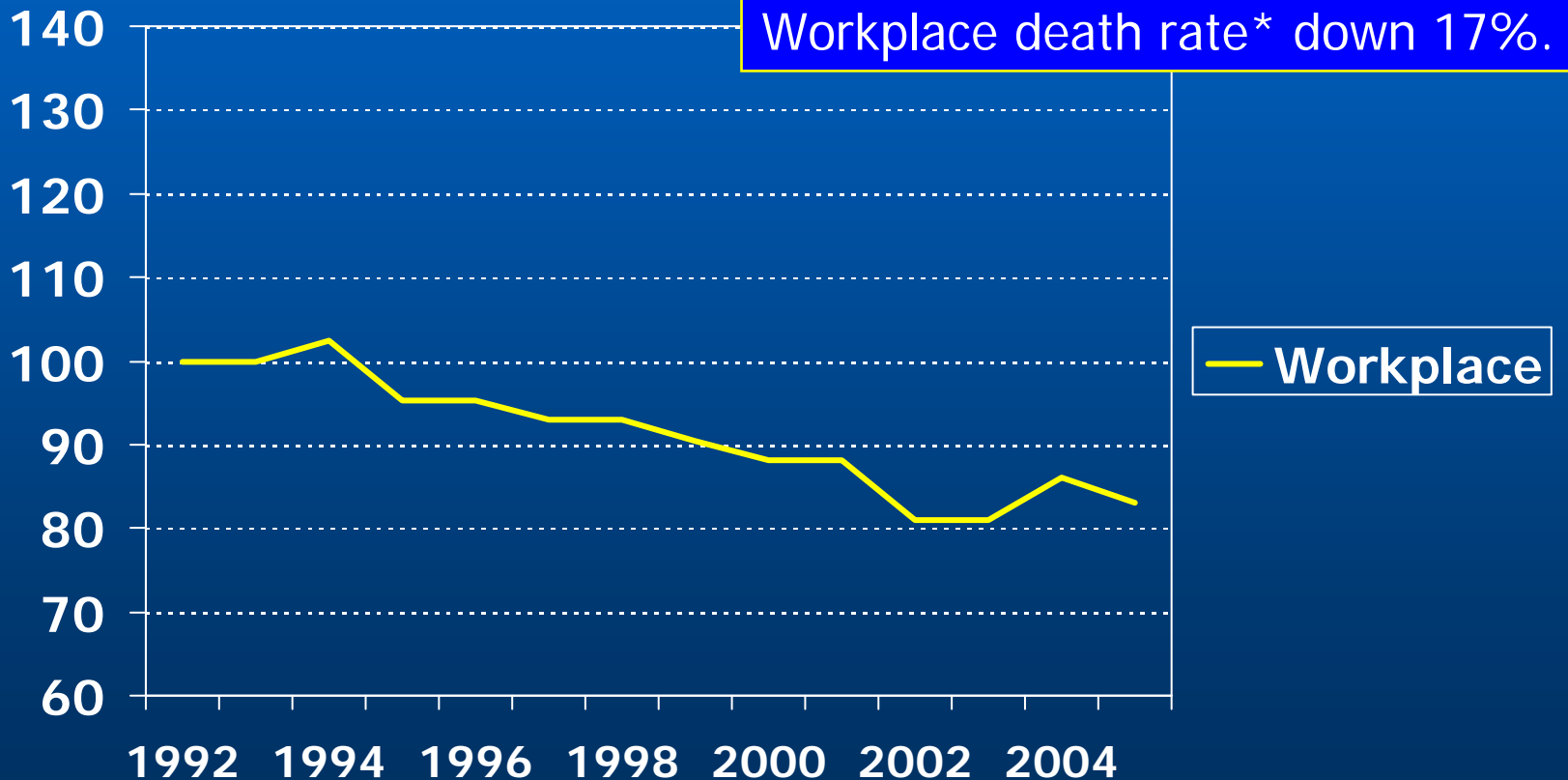
# U-I Disabling Injuries by Venue, 2005





# Venue Trends

Death Rate Indexes (1992=100)



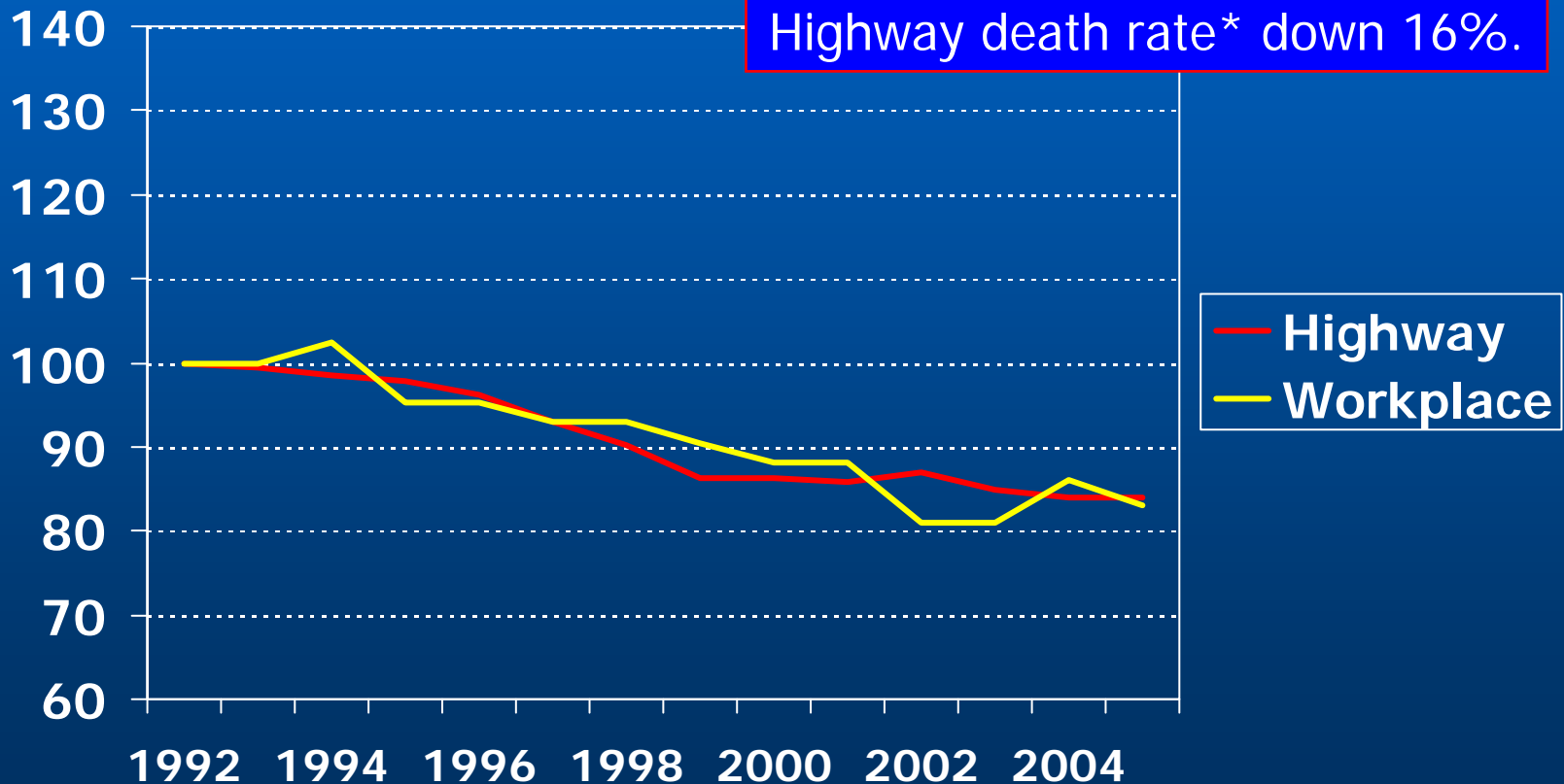
\*Deaths per 100,000 workers.





# Venue Trends

Death Rate Indexes (1992=100)



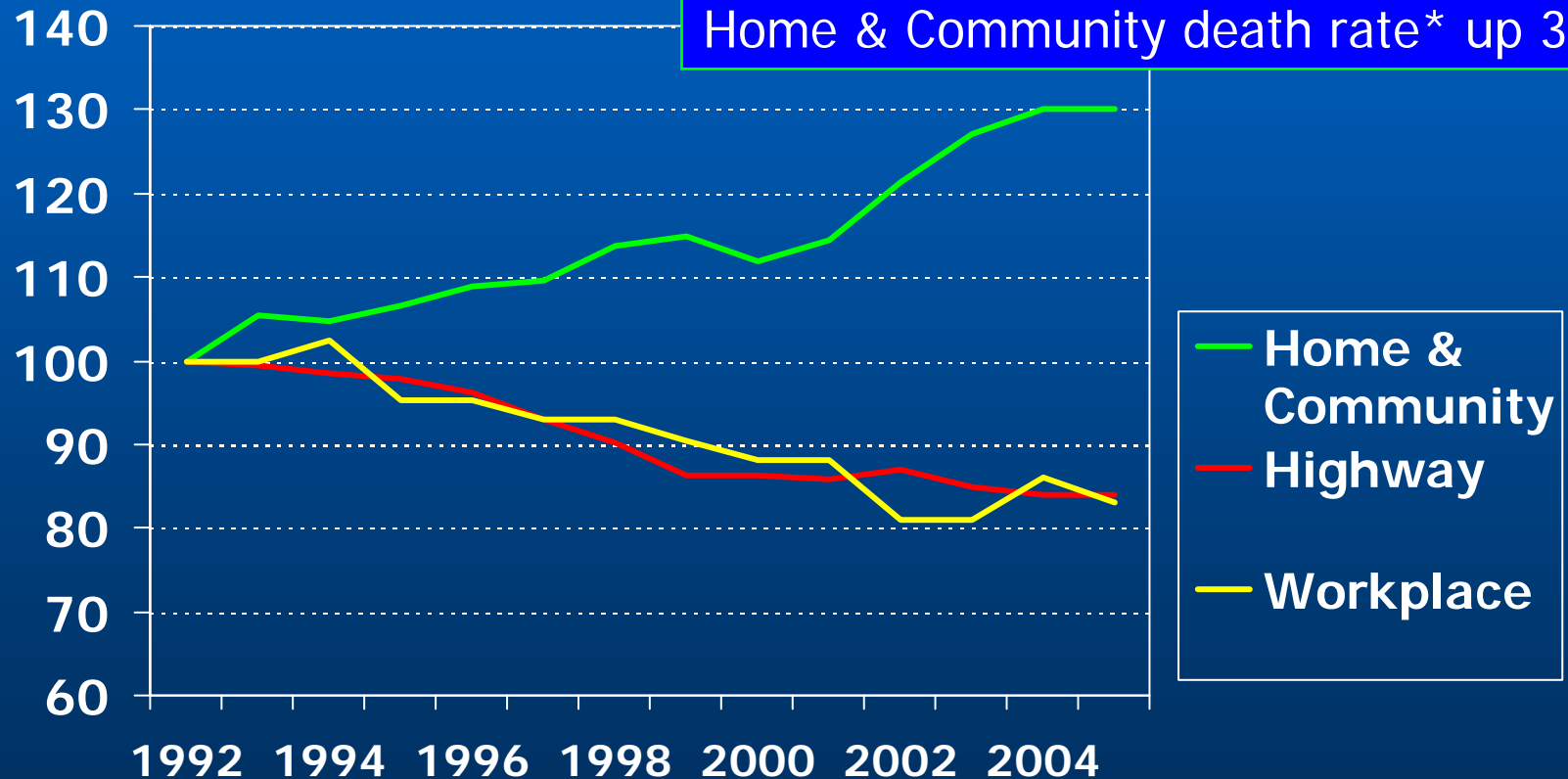
\*Deaths per 100,000,000 VMT.





# Venue Trends

Death Rate Indexes (1992=100)



\*Deaths per 100,000 population.

