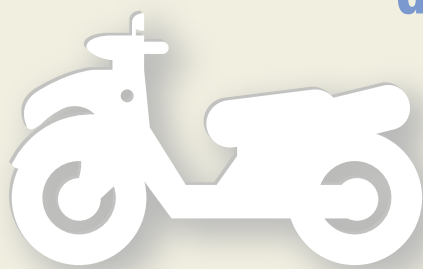




NATIONAL SAFETY MONTH 2015

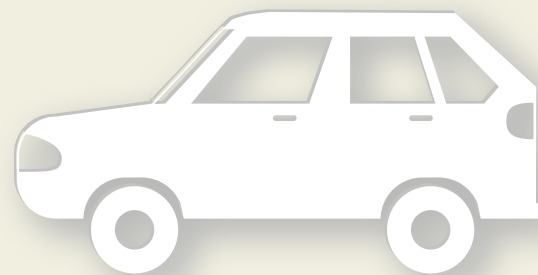
Be alert Don't wreck your summer

Increased traffic, construction and more teen drivers make summer driving more dangerous. Stay safe with these driving tips



Don't turn left in front of motorcycles

at intersections - that's when most motorcycle crashes occur



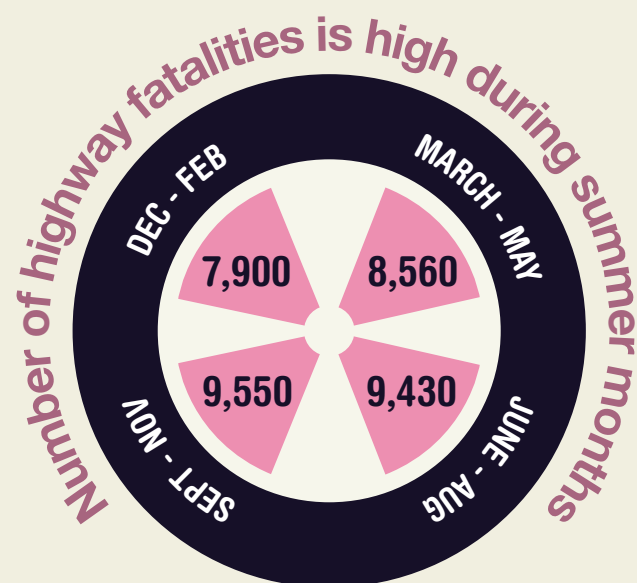
School's out so be aware - there are more inexperienced teen drivers on the road



Trucks need more stopping distance - avoid cutting in front of them before stop lights

Trucks have a higher center of gravity and may roll if they turn too quickly - give them room

Trucks have larger blind spots - be sure the driver can see you in both of his outside mirrors



Source: Injury Facts®, 2015 Edition

members
get more

